



AHD GROUP MODE SETUP

Instruction Manual

Models:
AHD-DV, AHD-LV

version 1.0 since 3 February 2020

ATTENTION!

This instruction manual contains important information about the installation and the use of the equipment. Please read and follow these instructions carefully.

Always ensure that the power to the equipment is disconnected before opening the equipment or commencing any maintenance work.

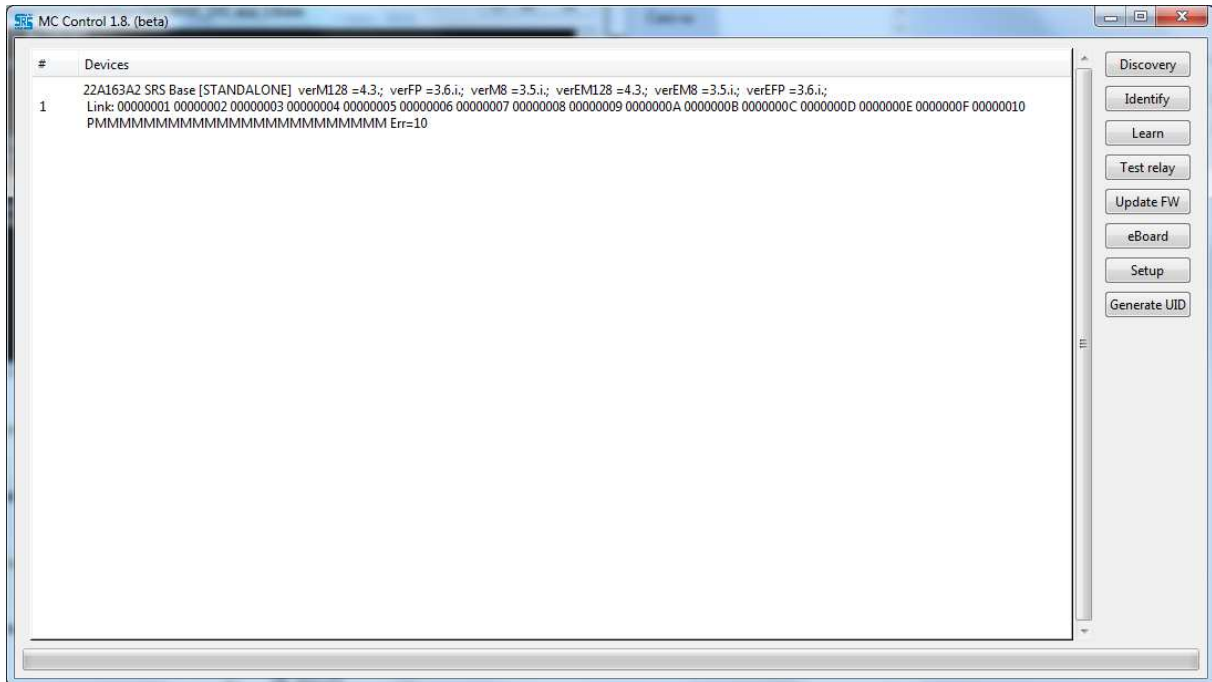
AHD_group mode_manual_M282

1. Install driver for FTDI USB to communication link adapter.

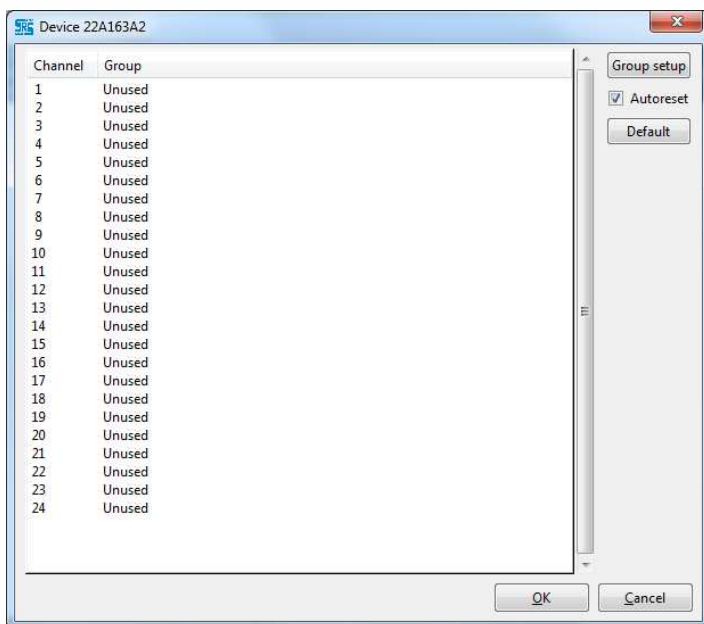
You can find actual driver here: <http://www.ftdichip.com/FTDrivers.htm>



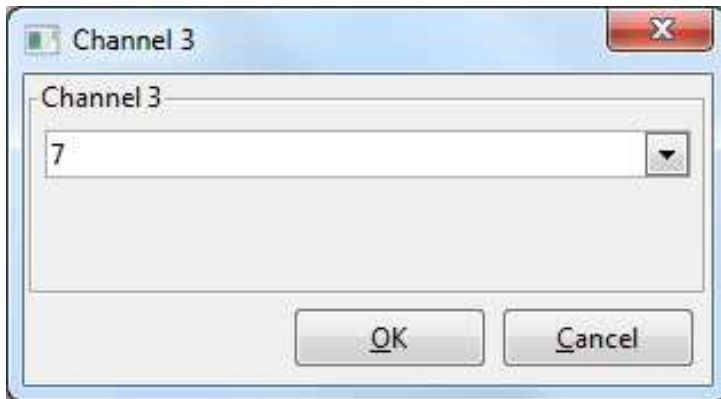
2. Connect USB to computer and start the application, you will see connected controller with unique ID:



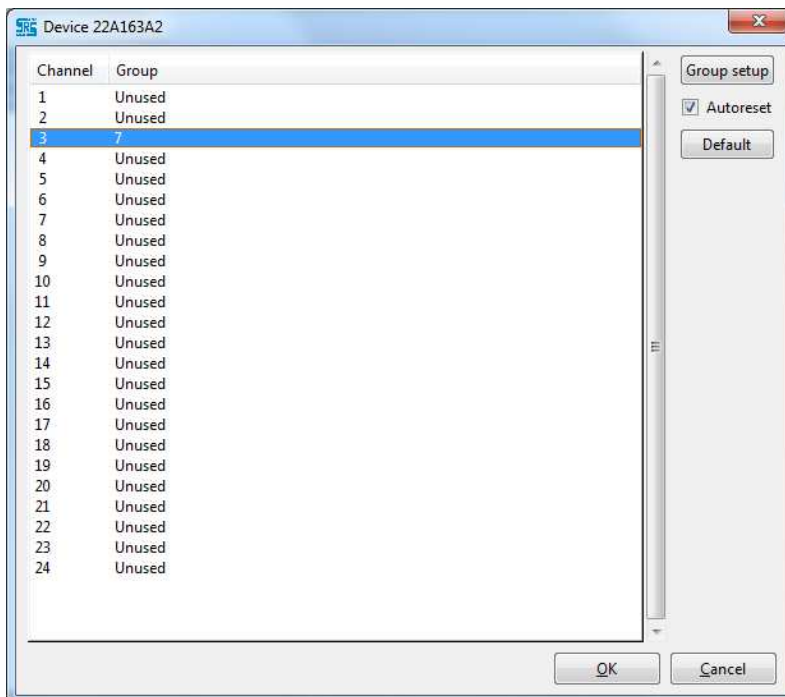
3. Double click to the device field and then click Setup button located on right side
4. You will see the channel to the GROUP assign. When channel is not assigned to any GROUP the Group says is UNUSED.



5. Double click to the channel number and assign the group – the group belongs to the G1-G24 button of the CMGxx REMOTE



6. Now you can see that channel 3 is assigned to group 3



7. Click OK for save. Now you can use the channel in non-GROUP mode via front panel or when CMGxx remote is connected unit will work in group mode /more channels controlled by group control switch/

Copyright 2017 SRS Group, s.r.o. | Specifications subject to change without notice.
Document: AHD_group mode_manual_M282 | Version 1.0 | Actual as of: 3 February 2020