

DDP-BAR6

Portable Dimmer Bar

The DDP-BAR-6 is a 6-channel dimmer for dimming of 1 to 4kW power PAR lights on each output. It can be connected to the DMX console via standard Neutrik DMX connector or via wireless DMX.

It is an ideal device for applications, where it is necessary to use small devices without dimmer packs or to make DMX wireless installations.



Power supply

AC230V/400V / 43-60Hz

Operating temperature

-20 °C to +60 °C

Housing

Aluminium housing

Dimensions & Weight

1514 x 100 x 620mm, 9.7kg

Warranty

5 years



DDP-BAR-6 features:

- 6A / 10A / 13A / 16A
- 6 dimmer outputs
- 3-phase operation
- 5A outputs secured with time-lag fuse
- Mini MCB for every channel
- Convectional cooling without fan
- Wide setup options
- Single-phase operation
- DMX/W-DMX signal selector
- Easy installation
- Input connector: Neutrik® PowerCon

DMX input with true output:

USITT DMX 512 (1990) isolated up to 1000V

Optional features:

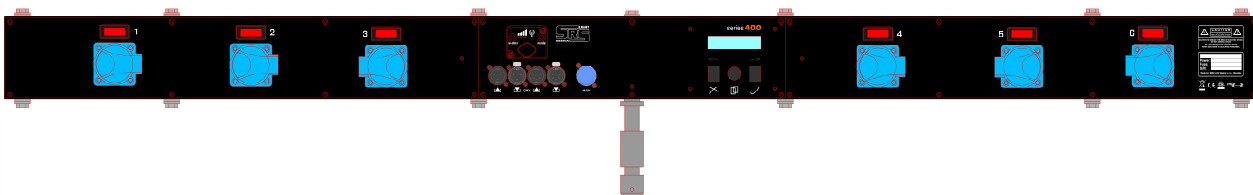
- W-DMX from Wireless Solution or LumenRadio
- 1P+N protection

DDP-BAR6_en_datasheet_M026

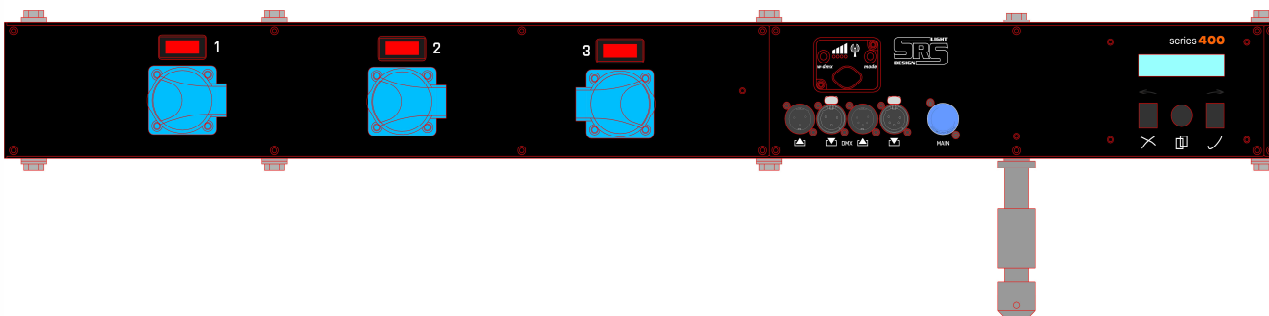
Output connectors:

- Schuko
- French Schuko
- CEE16/3p
- Neutrik PowerCon
- Other on request

Front view:



Detailed front view:



1. PowerCon input AC230V, 20A max or PG cable entry
2. DMX input/output via NC3/NC5 DMX input/output connector
3. Wireless DMX module
4. Mini MCB
5. Spigot with M10, 12x M10 mounting point for PAR lights

Top/bottom panel:



1. 6x M10 mounting point for PAR lights or C/clamp
2. 1x spigot M10
3. 2x secure wire mounting point

Side view:

