



House Light Controller

Instruction Manual

Models:

HLC600-DMX

version 1.0 since 3 February 2020

ATTENTION!

This instruction manual contains important information about the installation and the use of the equipment. Please read and follow these instructions carefully.

Always ensure that the power to the equipment is disconnected before opening the equipment or commencing any maintenance work.

HLC-DMX_en_manual_M113

IMPORTANT SAFETY INFORMATION

The following general safety precautions have to be observed during all phases of operation, service, and the repair of this equipment. Failure to comply with these precautions or with specific warnings in this manual violates safety standards of design, manufacture, and the intended use of this equipment.

Do not operate in an explosive atmosphere!

Do not operate this equipment in the presence of flammable gases or fumes. Operation of any electrical instrument in such an environment constitutes a definite safety hazard. Device should never be placed near or over a heat register or other source of heated air and it should not be installed or operated without proper ventilation.

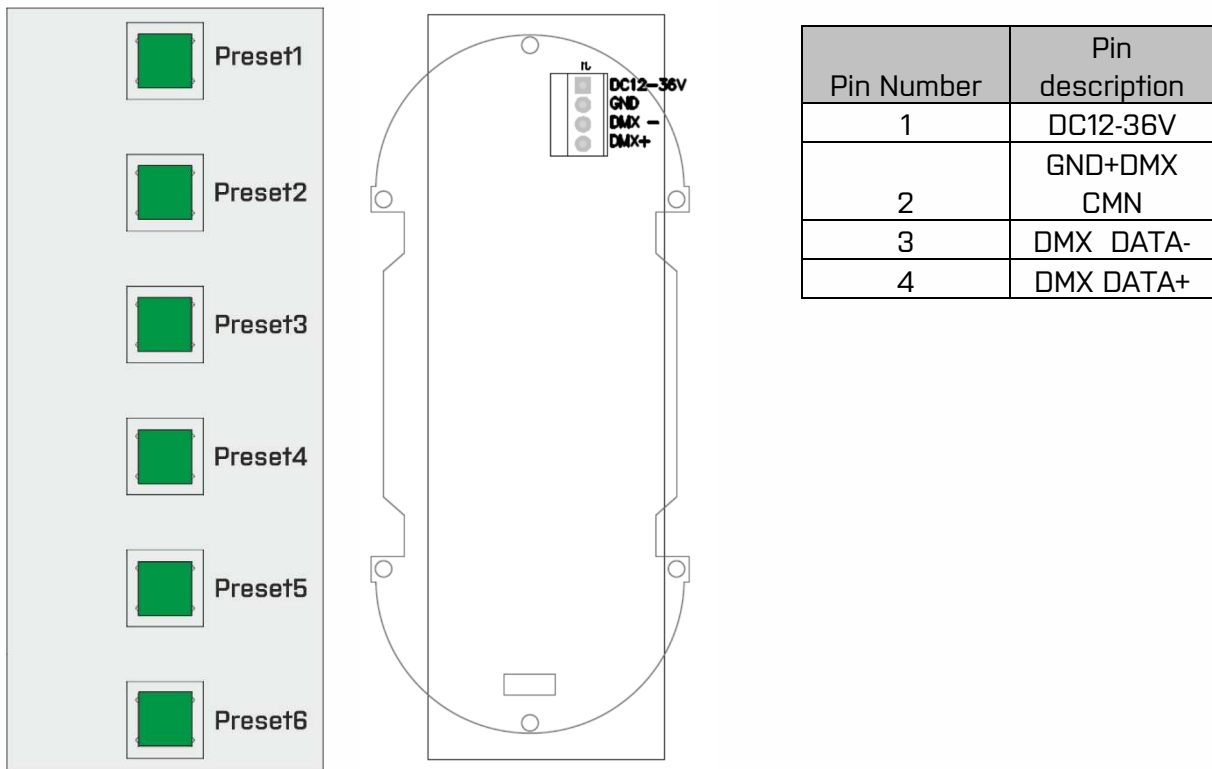
Houselight system connection

All parts of houselight system can be connected via UTP CAT5/CAT6 cable. Units are active so they can receive or transmit communication from or to NDP unit.

All programming and setup of scenes is done via NDP dimmer. In base mode each button calls the single scene 1-6. IF you need to program to run more scenes by single button press, you need to program HLC-DMX units via USB/RS485 cable connected to the USB port of dimmer.

HLC wall-mount stations:

On the rear side of the HLC wall-mount unit it is easy to detach green connector with pins marked below. The CAT5/CAT6 cable should be connected with these color codes. This color code is valid only for single master or multi-master station installation. All units controlled the single DMX data line need be connected parallel and share same DATA and power connections.



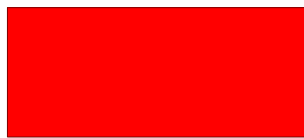
Scenes are called by press of bottom, from the top towards the bottom in this order:

Default settings of assign buttons to the scenes. You can change the setting via USB programming tool shipped with HLC controllers.

- Button 1: Scene 1
- Button 2: Scene 2
- Button 3: Scene 3
- Button 4: Scene 4
- Button 5: Scene 5
- Button 5: Scene 6

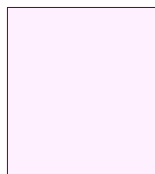
System schematics for PRESET programming

DC15V 1.6A Power supply

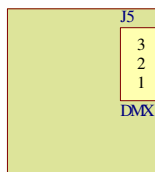
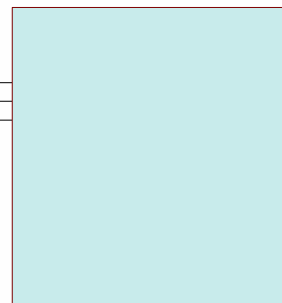


PRESET Programming

HLC-DMX



DMX equipment



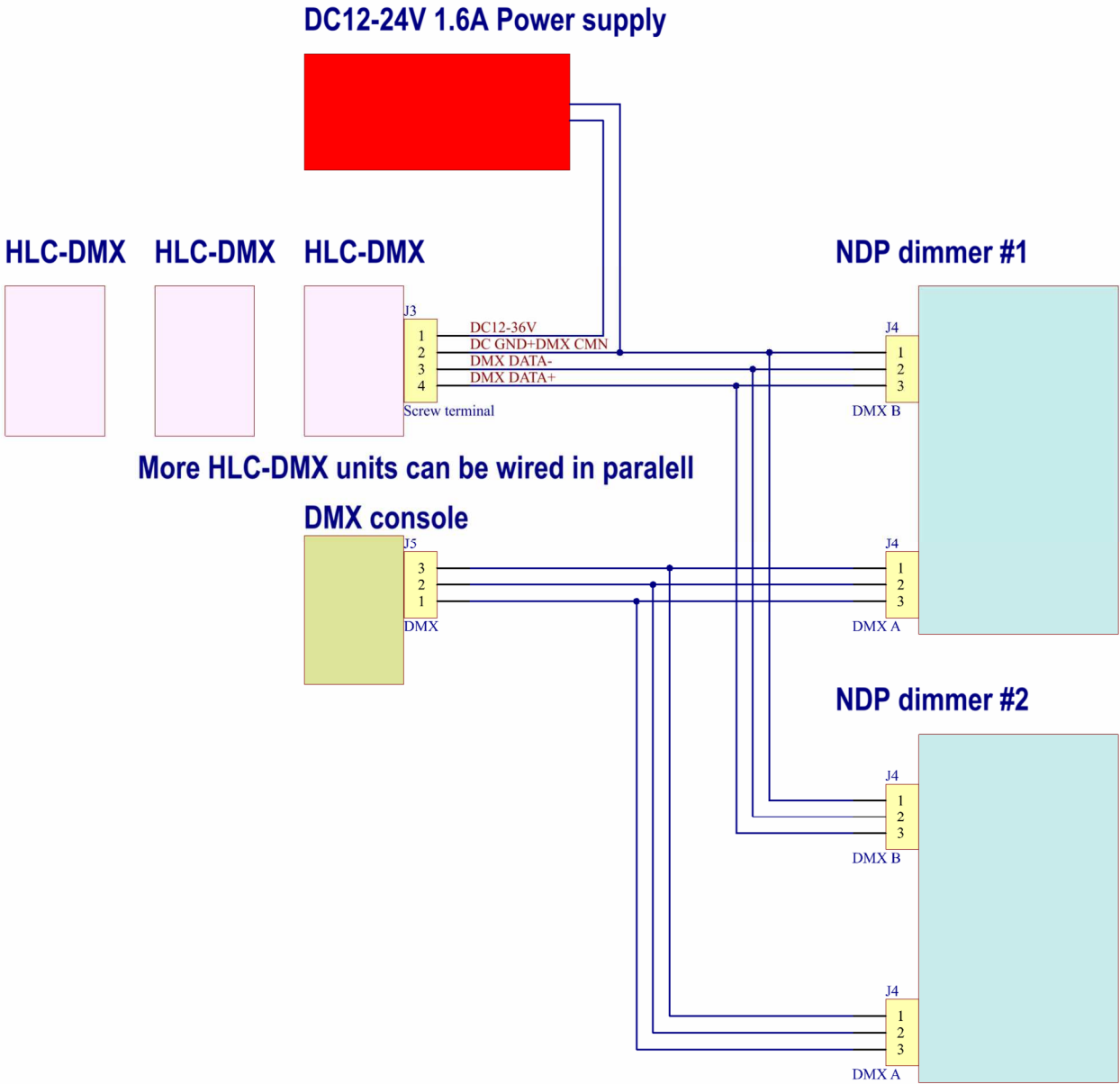
DC12-36V
DC GND+DMX CMN

DMX DATA-

DMX DATA+

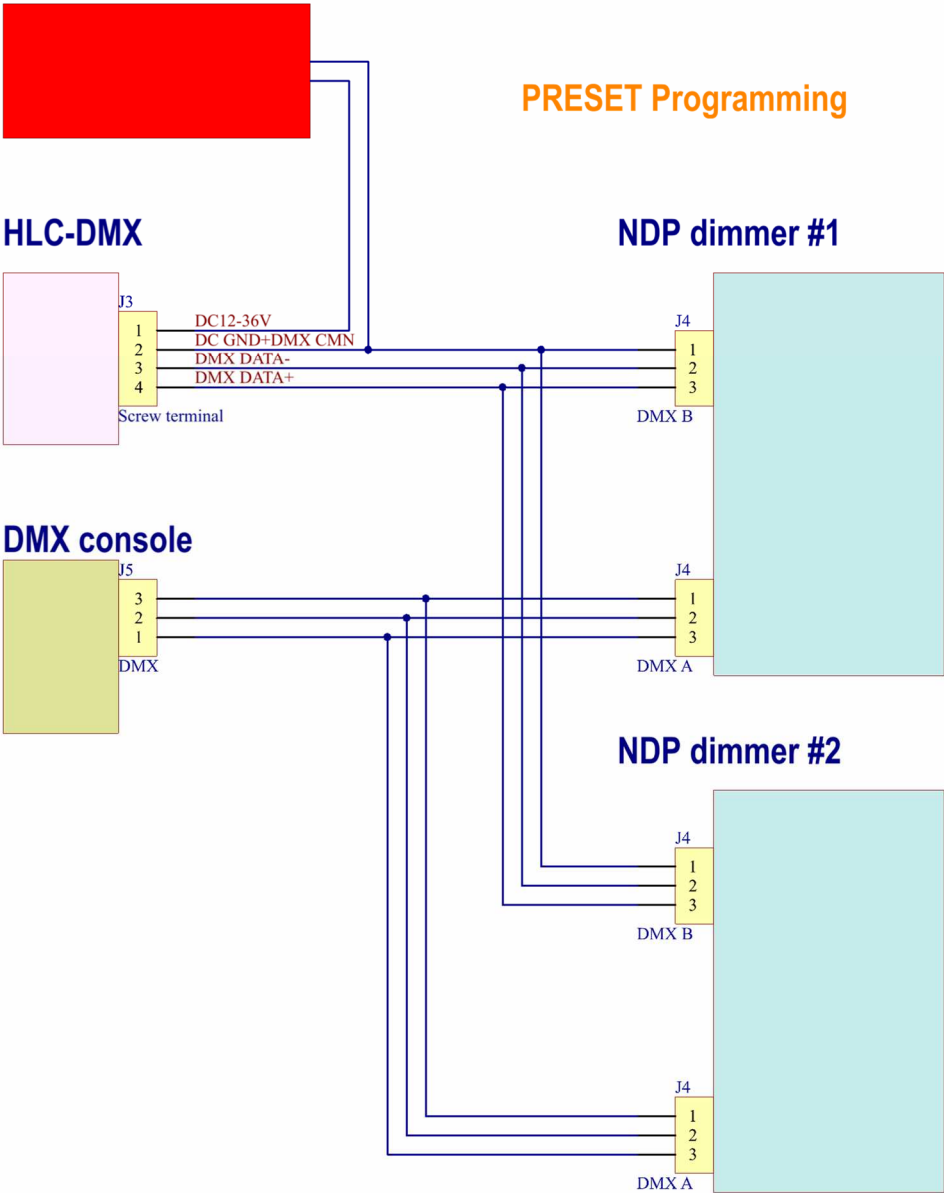
USB to RS485 programming cable, for software please contact us at sales@srs-group.com

System schematics for HLC-DMX control of more NDP dimmers with DMX console connected to port



System schematics for HLC-DMX control of single DMX equipment.

DC12-24V 1.6A Power supply



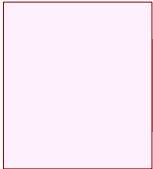
The special mode of HLC when it'll record the DMX settings need be selected. For software please contact us at sales@srs-group.com

DC15V 1.6A Power supply

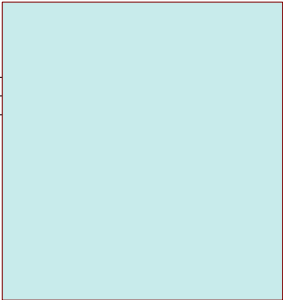


HLC-DMX control

HLC-DMX

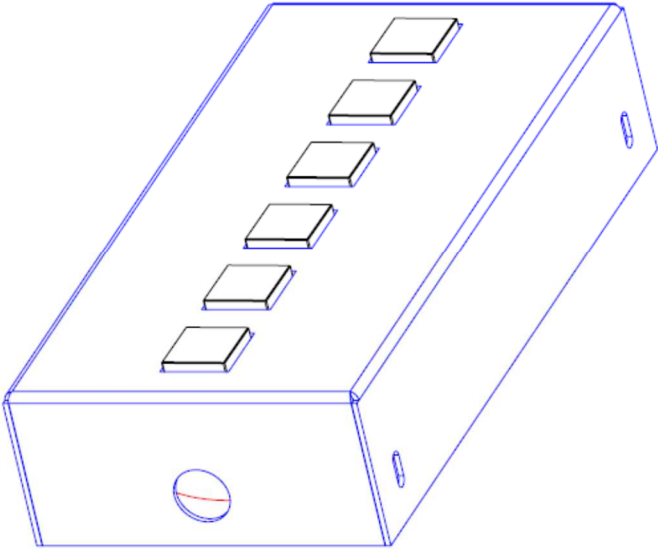


DMX equipment



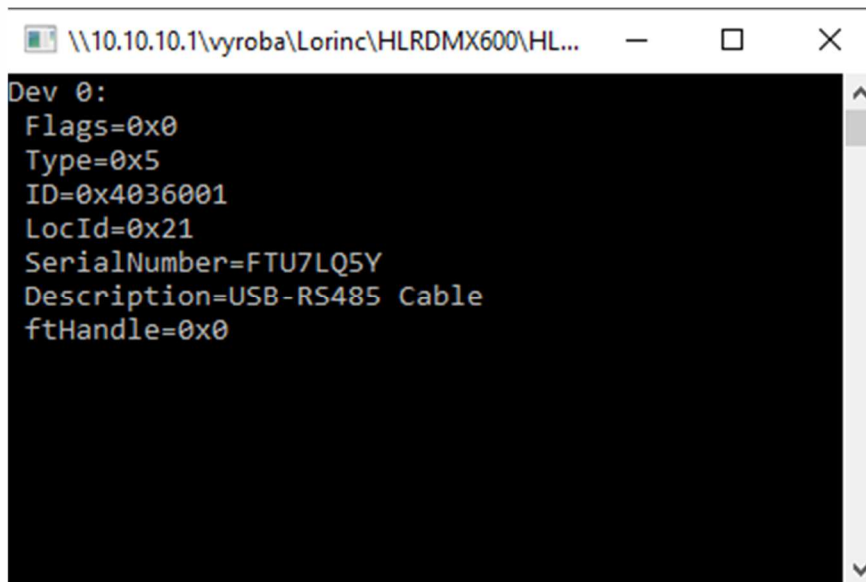
DC12-36V
DC GND+DMX CMN
DMX DATA-
DMX DATA+

3D preview of unit.



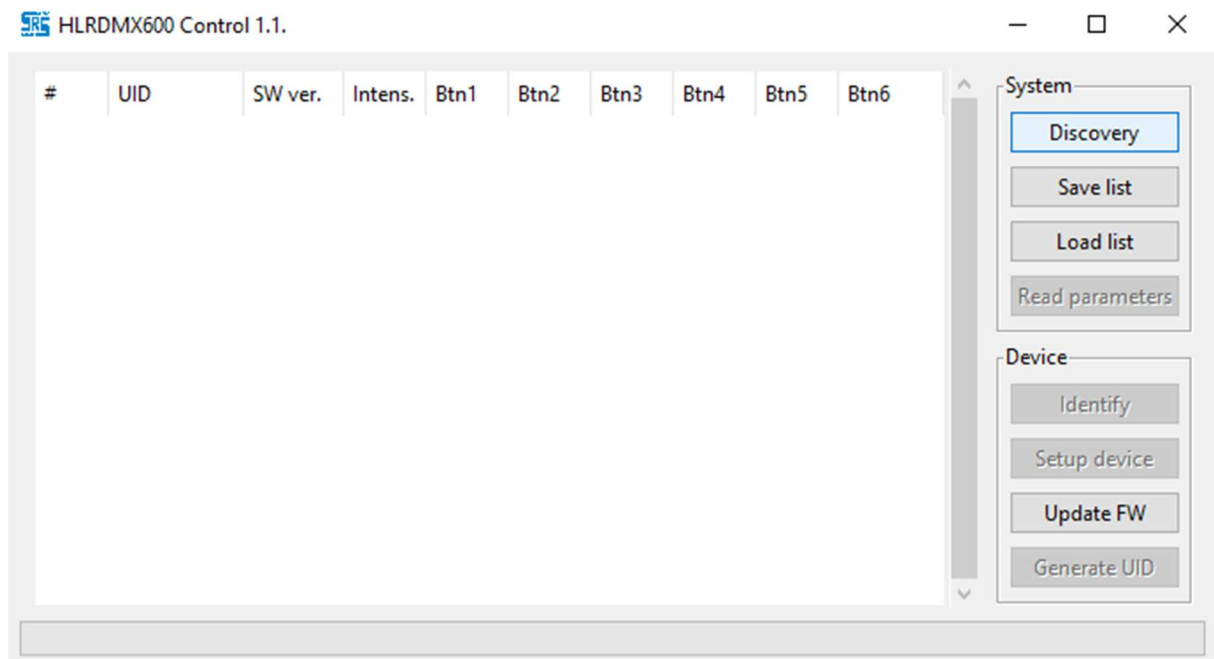
Please [download](#) the application for setup of HLC600-DMX wall mount stations. There is also [FTDI driver](#) needed and USB to RS485 cable.

Please first install USB driver and then attach USB to RS485 to PC. Then try to load the application. If the USB driver has been loaded successfully, you can see the serial number and the Description.

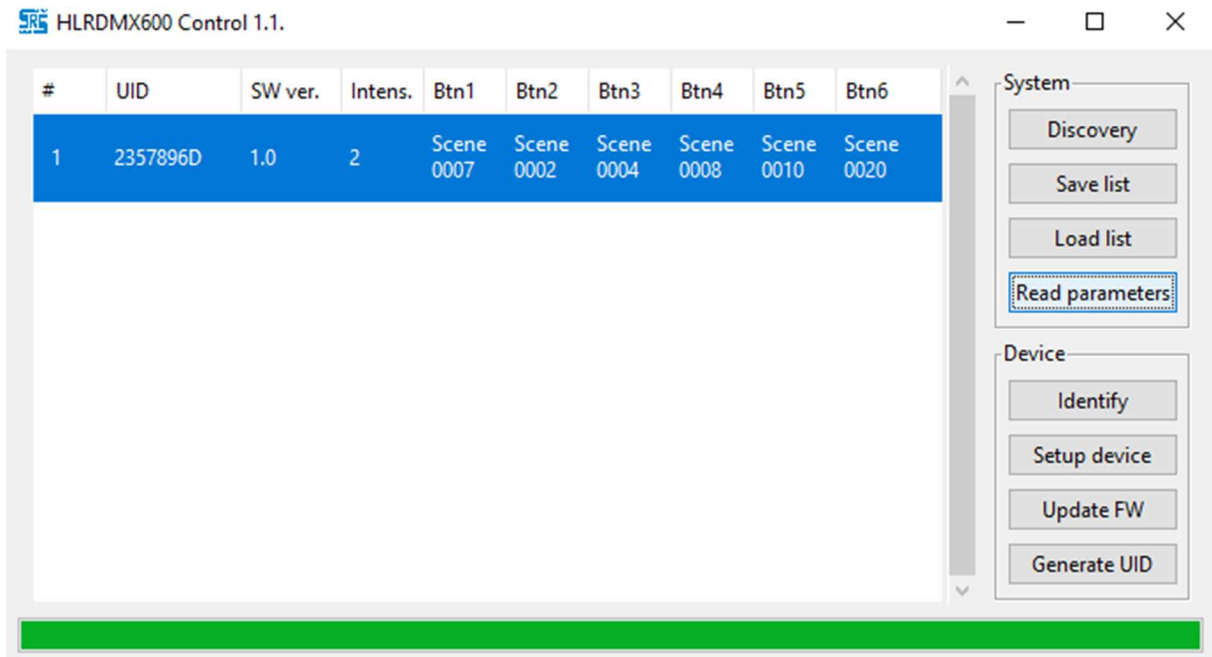


```
\\10.10.10.1\vyroba\Lorinc\HLRDMX600\HL... - □ ×  
Dev 0:  
Flags=0x0  
Type=0x5  
ID=0x4036001  
LocId=0x21  
SerialNumber=FTU7LQ5Y  
Description=USB-RS485 Cable  
ftHandle=0x0
```

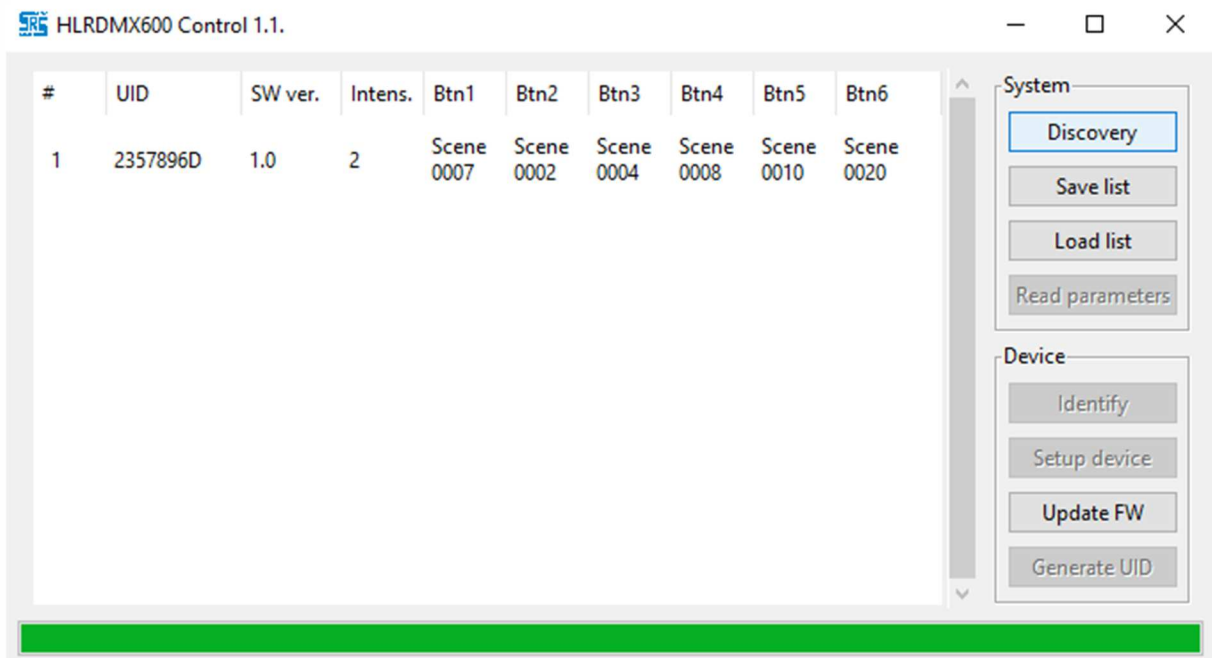
The application will be displayed. Please first click to Discovery button and all connected HLC-DMX stations will be loaded.



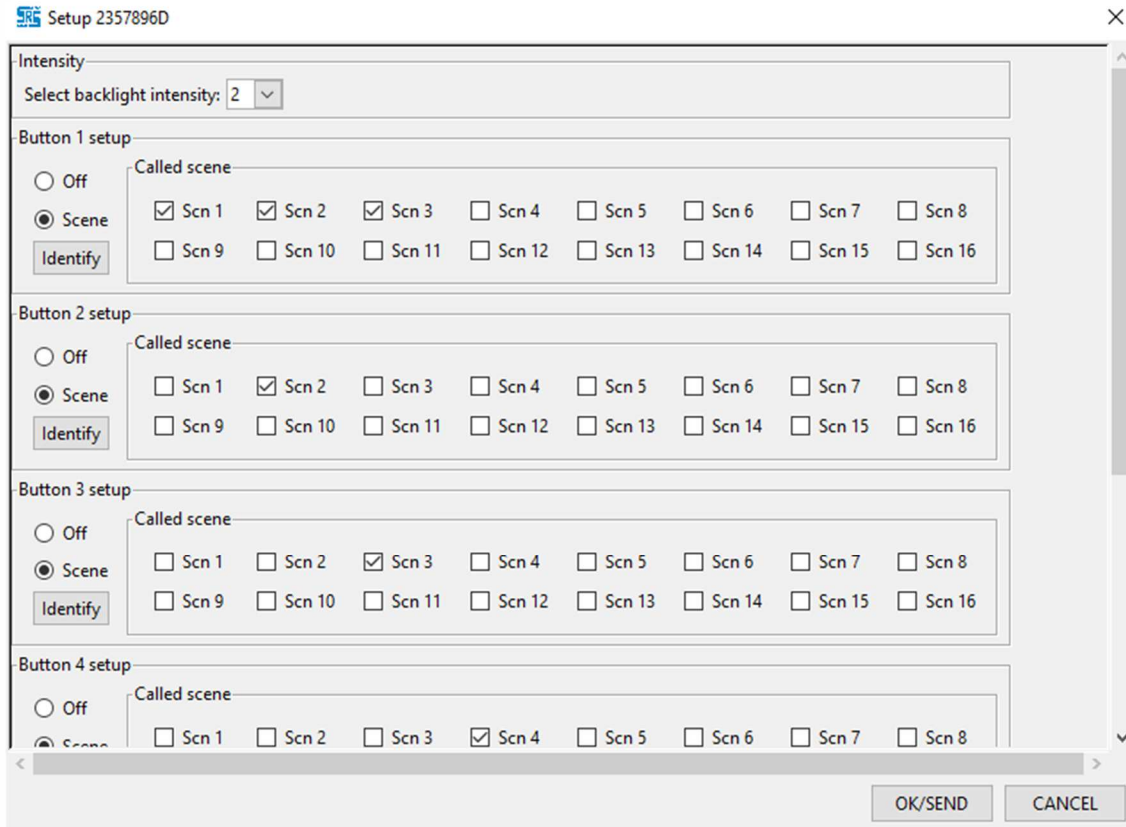
Now you can see one HLC-DMX station loaded with scene assign list displayed. The list of loaded units can be saved via Save list button, later loaded by Load list button and refreshed parameter list can be loaded by Read parameters button.



Now you can see one HLC-DMX station loaded with scene assign list displayed. For configure of the #1 please double click to unit or click Setup device button.



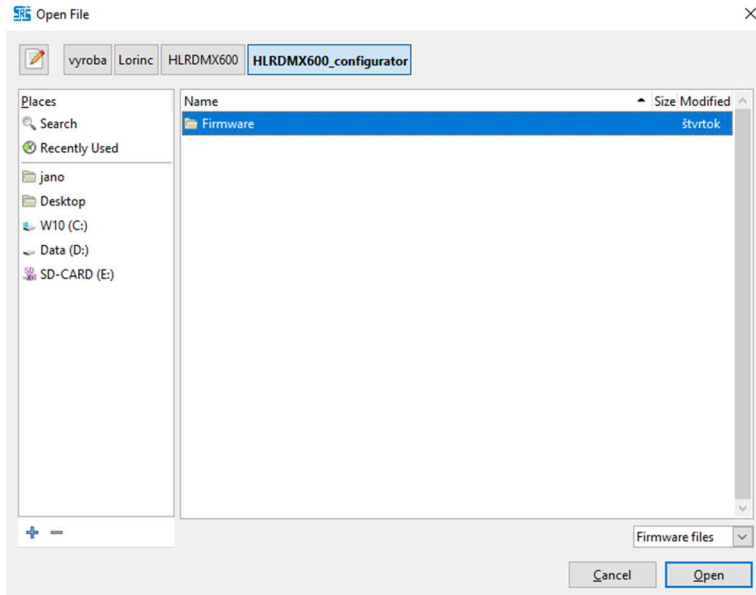
After click of Setup service button you can set the default backlight intensity of buttons in three steps. The 0 is darkest one, the 2 lightest one. There you can also see the button setup. The OFF means that this button is not used. Scene means that button is called scene and then there are thick box where you can select which scenes are called by this button. Maximum is 16 scenes. These scenes are mostly set on NDP or DXD device. BY pressing the OK/SEND button the configuration is sent to the HLC-DMX wall station.



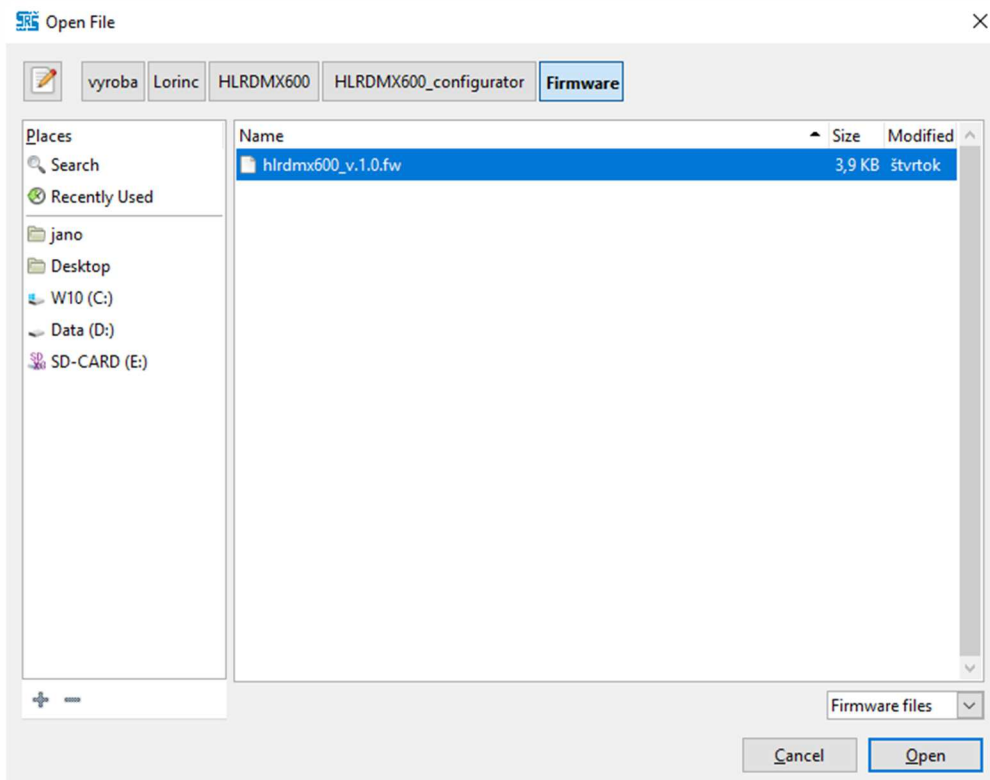
On the picture you can see that Button 1 is calling scene1+2+3
Button 2 is calling only Scene2
Button 3 is calling only Scene3

Firmware update:

For firmware update please click Update Firmware in main menu and select the firmware file provided by SRS Group. During update is Button 5 flashing fast.



Select firmware file and press OPEN



Power input:

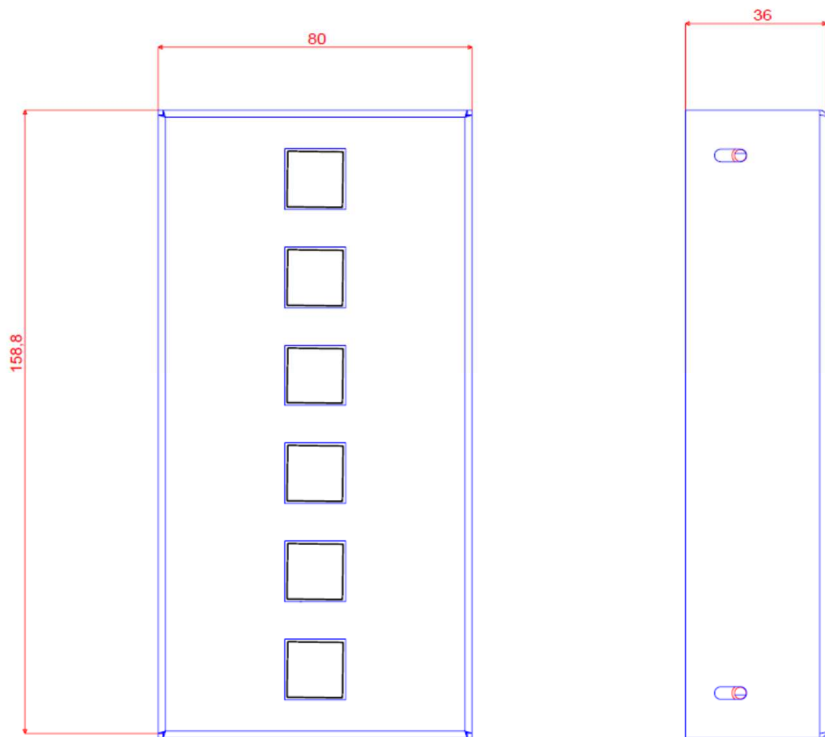
DC12-36V

Consumption 0,02A /12V

Housing/Size:

RAL7035 white matt surface

158,8*80x36mm, wall mount installation box is needed !

**Weight:**

0,1 kg

Temperature of use:

-10 °C...+45 °C

Warranty:

Two-year /24-month/ warranty

DECLARATION OF CONFORMITY
According to guidelines 89/336 EEC and 92/31 EEC:

Name of producer: SRS Group s.r.o.

Address of producer: Rybnicna 36/D, 83107 Bratislava, Slovak Republic

Declares that the product

Name of product: HLC-DMX system

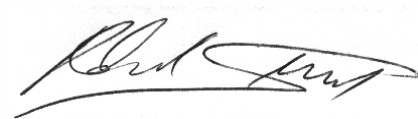
Type: HLCxxx-DMX and variants

Corresponds to the following product specifications:

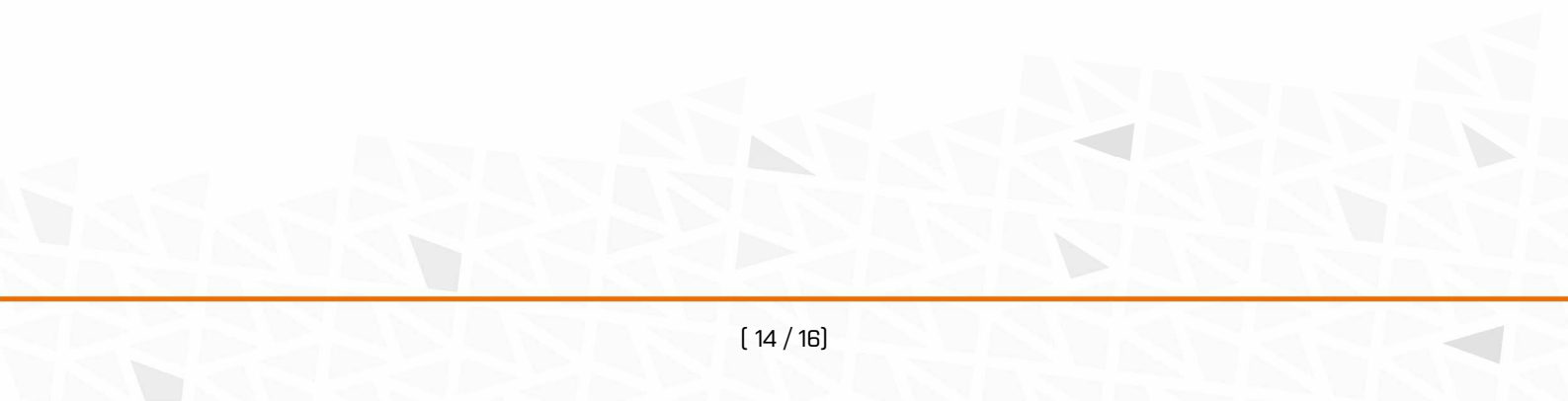
Safety: EN60065, resp. EN 60950

EMC: EN55103-1, resp. EN55103-2

Bratislava, 10 May 2011



Robert Sloboda





Copyright 2017 SRS Group s.r.o. | Specifications subject to change without notice.
Document: HLC-DMX_en_manual_M113 | Version 1.0 | Actual as of: 3 February 2020



SRS Group s.r.o.

Rybnicna 38/D | 831 07 Bratislava | Slovakia

Phone: +421 2 32 661 800

Email: sales@srs-group.com | www.srs-group.com

