

iGENT DMX / RS232 / RS422 Converter



iGENT is a device that serves as a multi-functional converter from DMX to RS232 commands. The main feature is an easy-to-use control interface that helps to create and program new commands into the device.

iGENT was developed to control DMX projectors, plasma TV displays, and other devices with RS232 or RS422 ports.

The device can also be controlled using the W-DMX signal and features the W-DMX true OUT function, resulting in the presence of the DMX signal from the W-DMX on the DMX OUT connector.

Power supply

AC230V / 50Hz / 16A max

Operating temperature

-20 °C to +60 °C

Housing

Steel; with powder coating

Dimensions & Weight

150 x 44 x 145mm, 0.8kg

Warranty

2 years



iGENT features:

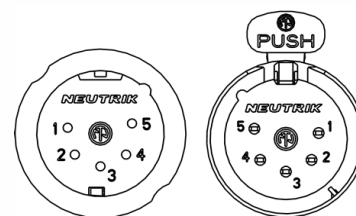
- DMX / W-DMX controlled
- DMX / W-DMX true output
- Built-in power supply
- USB port for firmware upgrade / software commands update

DMX 512 / W-DMX port

- USITT DMX 512 (1990) output protected with transil diodes
- W-DMX OEM module – wirelessdmx.com

Pin connection on the 5-pin XLR plug:

- Pin 1:** GND
Pin 2: DMX -
Pin 3: DMX +
Pin 4, 5: Not connected



RS232 interface:

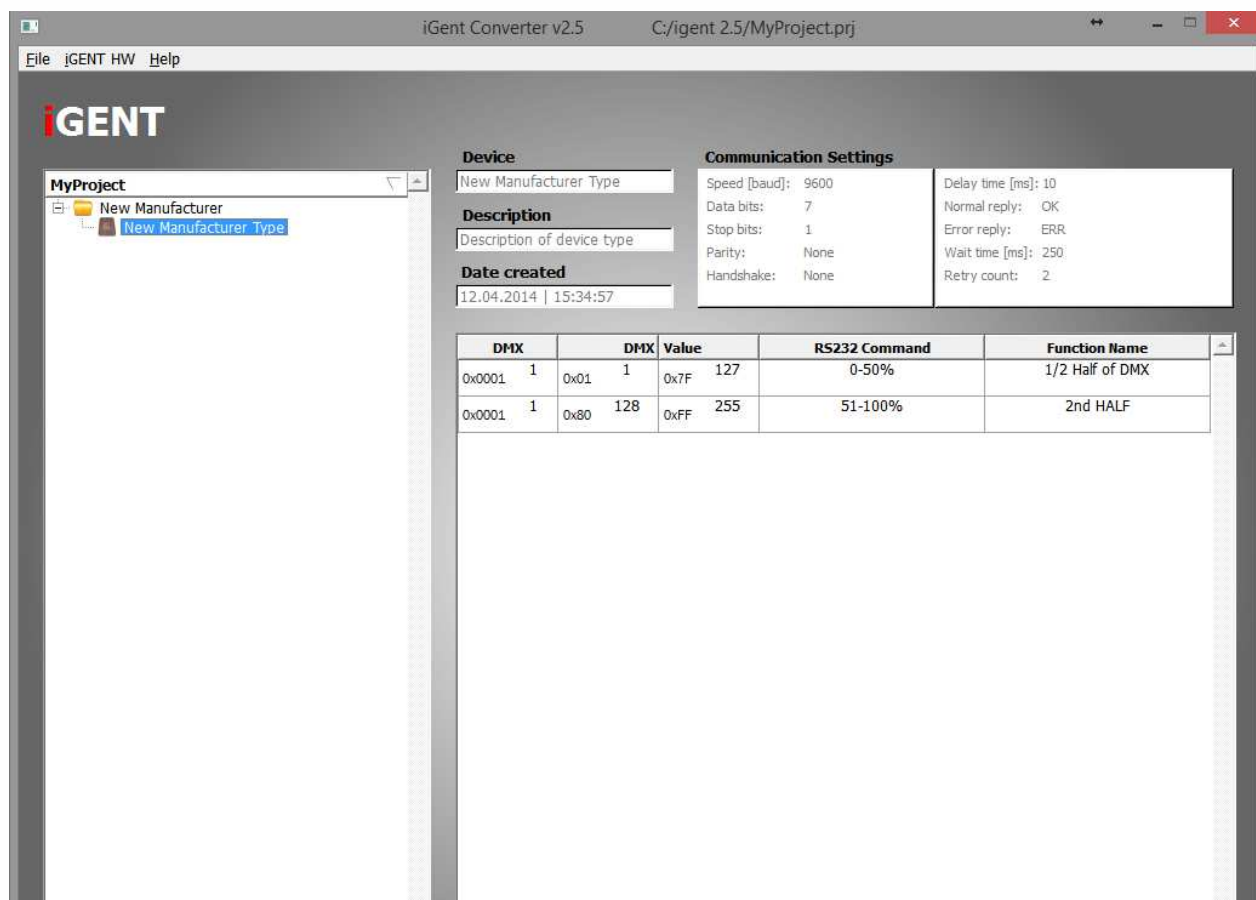
RX/TX + RTS/CTS

RS422 interface:

RX pair + TX pair

iGENT_en_datasheet_M116

iGENT software:



Software options:

1. Load and save configurations

- From/to file
- From/to USB key

2. Custom configurations for all RS232/RS422 devices:

- Variable DMX start address
- Variable DMX channel value/range
- Variable command message
- Assigning of the RS232/422 command to:
 - DMX channel 1-512
 - DMX value 0-255
 - DMX values range 0-10 and 30-255

3. Custom communication preferences:

- RS232/RS422 speed
- Variable data bits, stop bits, handshake
- Variable command delay time
- Variable normal/error reply processing
- Variable wait for reply to command
- Variable delay-time between commands