



iGENT-G2 DMX/RS232 Converter Instruction Manual

Models:

iGENT-G2-5

version 1.0 since 4 June 2020

ATTENTION!

This instruction manual contains important information about the installation and the use of the equipment. Please read and follow these instructions carefully.

Always ensure that the power to the equipment is disconnected before opening the equipment or commencing any maintenance work.

IMPORTANT SAFETY INFORMATION

The following general safety precautions have to be observed during all phases of operation, service, and the repair of this equipment. Failure to comply with these precautions or with specific warnings in this manual violates safety standards of design, manufacture, and the intended use of this equipment.

Do not operate in an explosive atmosphere!

Do not operate this equipment in the presence of flammable gases or fumes. Operation of any electrical instrument in such an environment constitutes a definite safety hazard. Device should be never placed near or over a heat register or other source of heated air and it should not be installed or operated without proper ventilation.

Mains 85-265V connection

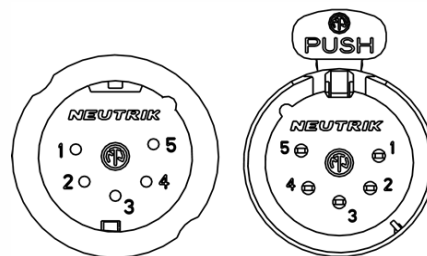
AC power is connected to the splitter via Neutrik PowerCon blue connector. Standard supply is UNISCHUKO lead with Neutrik PowerCon. Always respect the markup of L and N on connectors for correct wiring of Line and Neutral.

DMX 512 / W-DMX port

USITT DMX 512 (1990) output protected with TRANSIL diodes

Pin Connection on the 5-pin XLR plug:

Pin 1: GND
Pin 2: DMX -
Pin 3: DMX +
Pins 4, 5: Not connected



W-DMX interface:

Compatible with wirelesdmx.com and W-DMX TX devices made by SRS

RS232 interface:

RX/TX + RTS/CTS

RS422 interface:

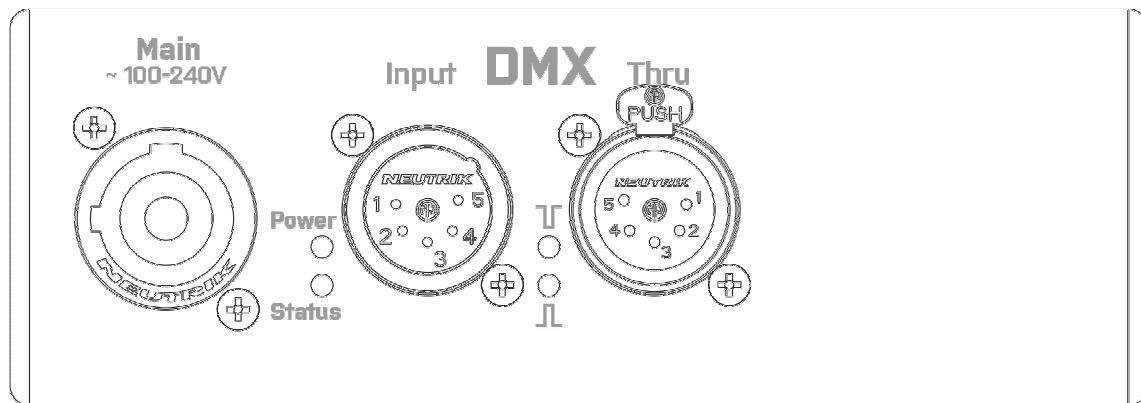
RX line pair

TX line pair

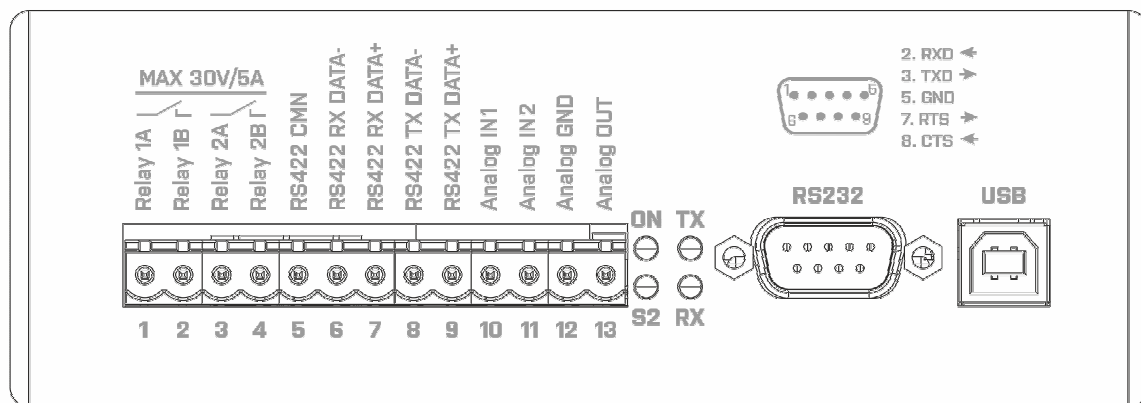
USB interface:

- FTDI with XP/w7/w8 compatibility
- Firmware upgrade port
- Settings upgrade port

Front panel:



Rear panel:



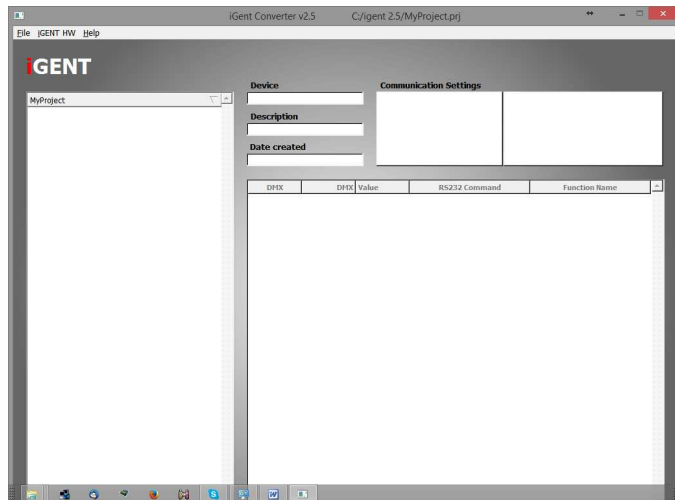
Function description

iGENT-G2 is a device that functions as a multifunction converter from DMX to RS232 commands. The main feature is easy control user interface which helps to create and program new commands into the device. iGENT-G2 was originally developed to control the DMX projectors, Plasma TV displays and other equipment with RS232 or RS422 port.

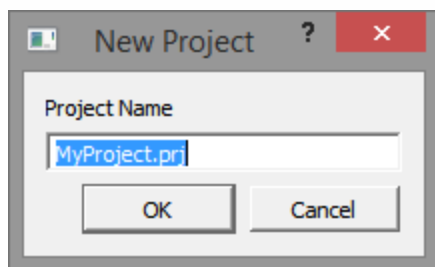
The device can also be controlled by the W-DMX signal and have the W-DMX Thru out function meaning the DMX signal from the W-DMX is also present on the DMX out connector.

iGENT application manual

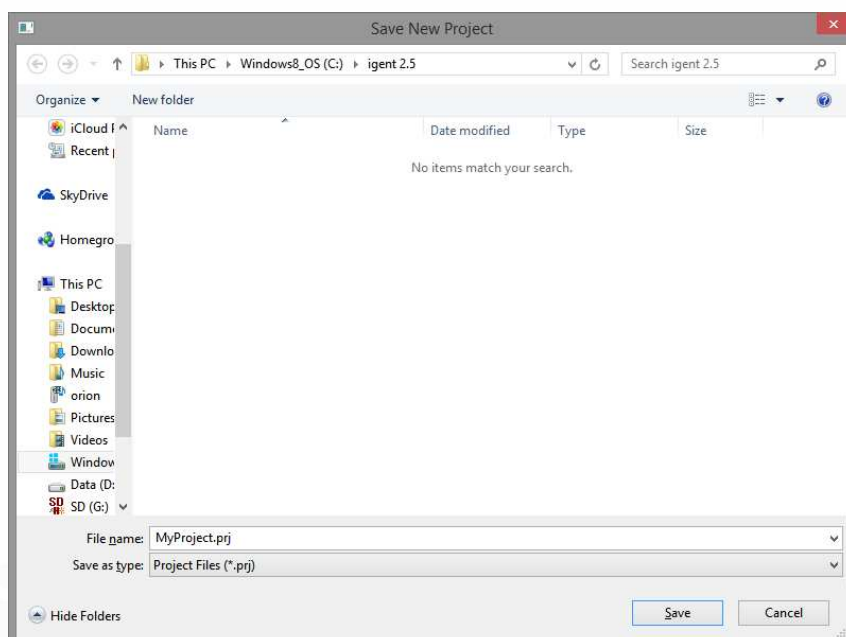
Please install the iGENT-G2 application.
Please start the iGENT-G2 application



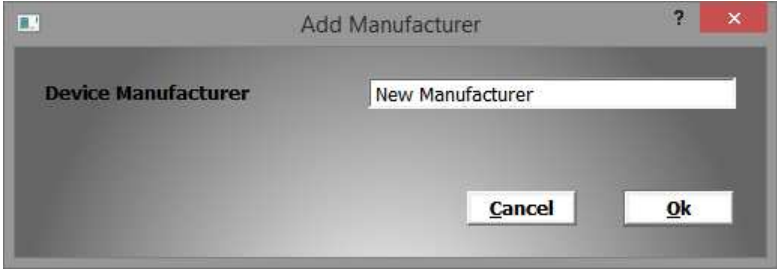
Click File New project and name it:



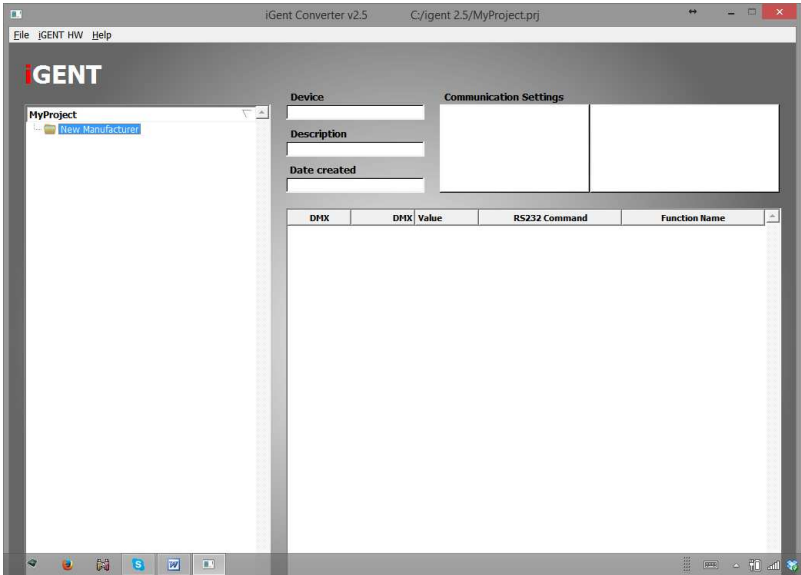
Then save it on local disk:



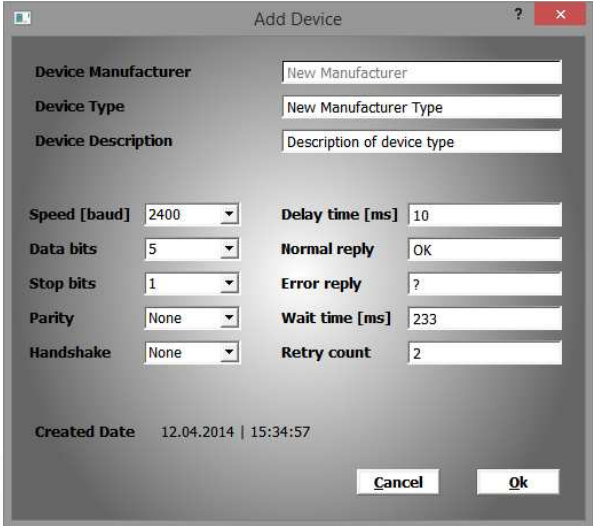
Please use mouse and make right click in My Project window.
There will be displayed window with device manufacturer name:



You will see new manufacturer folder there. Here you can add various device per same manufacturer.



With right click on New Manufacturer you can add new device and setup communication parameters



Speed/Data bits/Stop bits/Parity and Handshake: These details are specified in device manual

Delay time: says what delay is between receive of DMX command to send the RS232/RS422 command

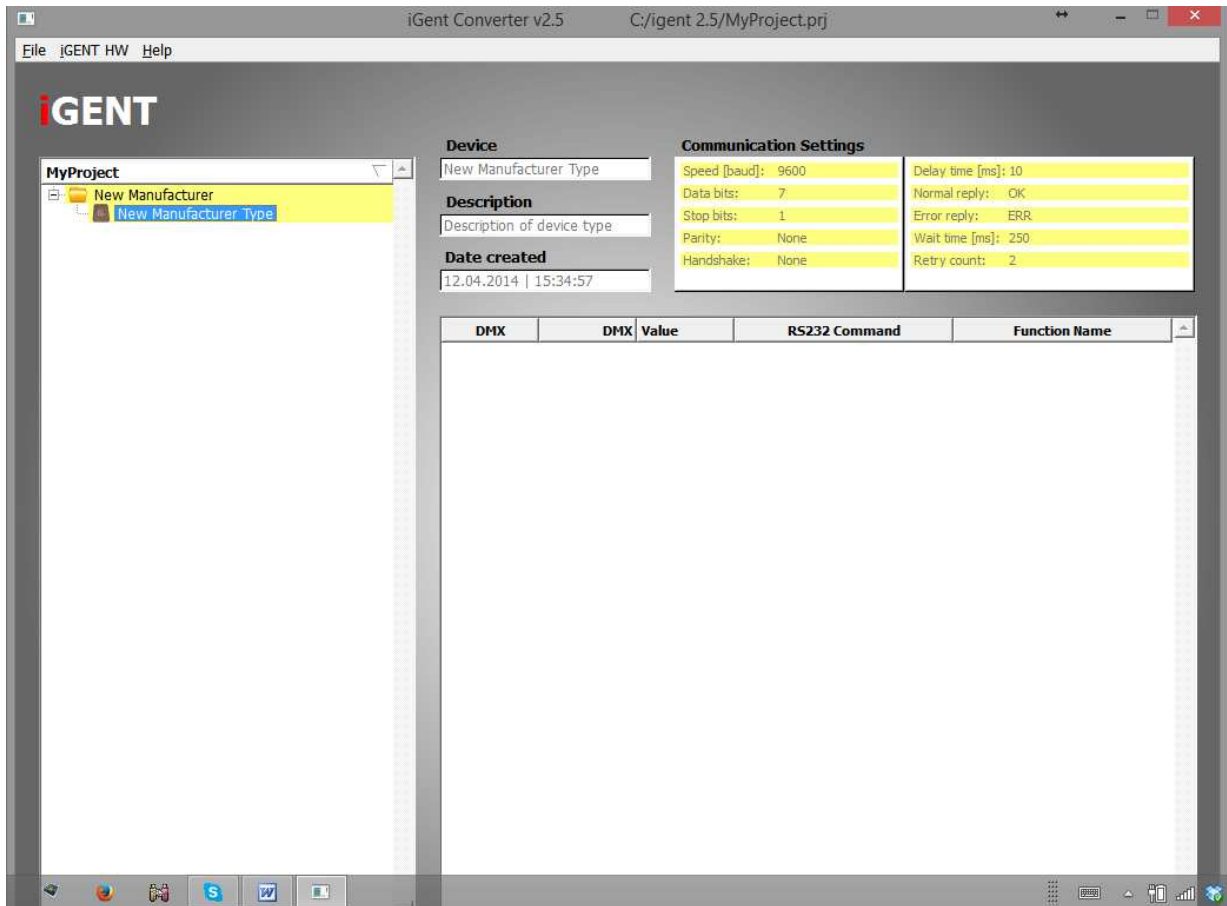
Normal reply: When this reply is received there isn't RS232 command resended

Error reply: when this or no reply is received – unit will retry to send the command

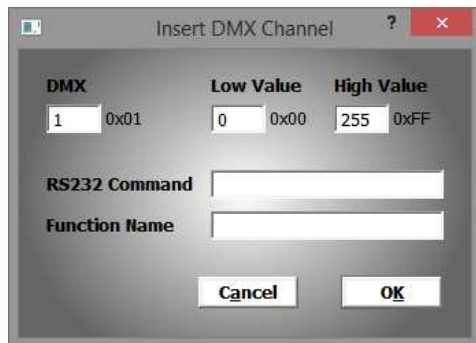
Wait time: specify time that iGENT-G2 will wait for Normal reply/Error reply

Retry count: specifies how many times the iGENT-G2 will resend the RS232 command when Normal reply has been not received.

Click Ok and you will see yellow items – this indicates that settings have not been saved. Please use File>SAVE command to save of details. When project is saved the all data are white.



Now please click by right button of mouse inside DMX window. Next dialog will be displayed



DMX: is DMX channel which trigger the command

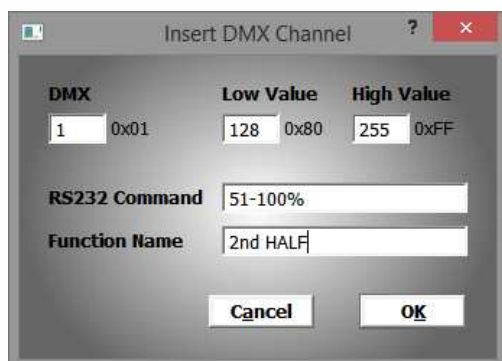
Low / High value:

1-512 – command will be sent when there is DMX value of 1-521

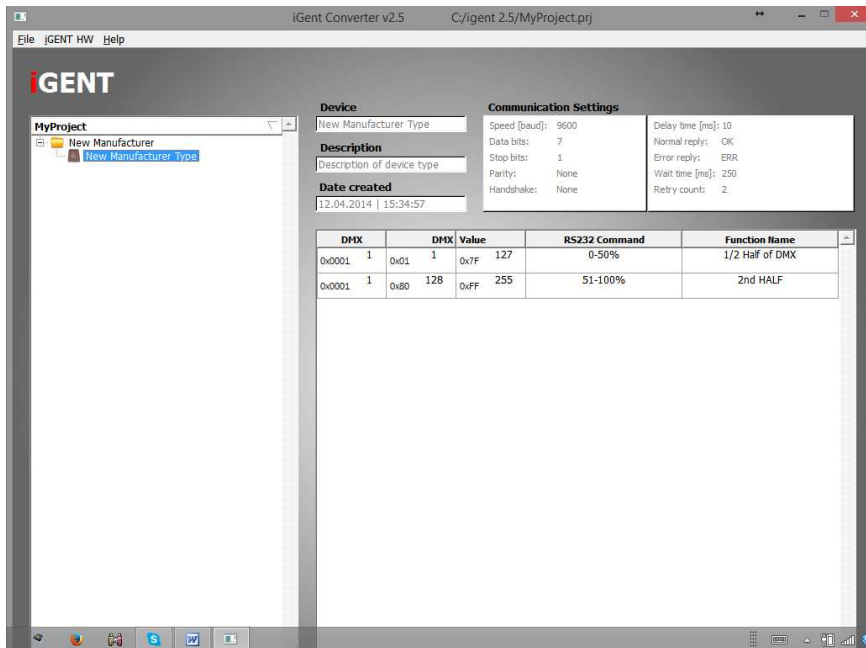
128-512 : command will be sent when DMX value is greater than 50%

RS232 command: This will be sent out from RS232/RS422 – use maximum of 19 characters

Function name: Here you can write something about command to know what was programmed. Use maximum of 19 characters.



Please click to FILE>SAVE. Now you can see two commands that are programmed.

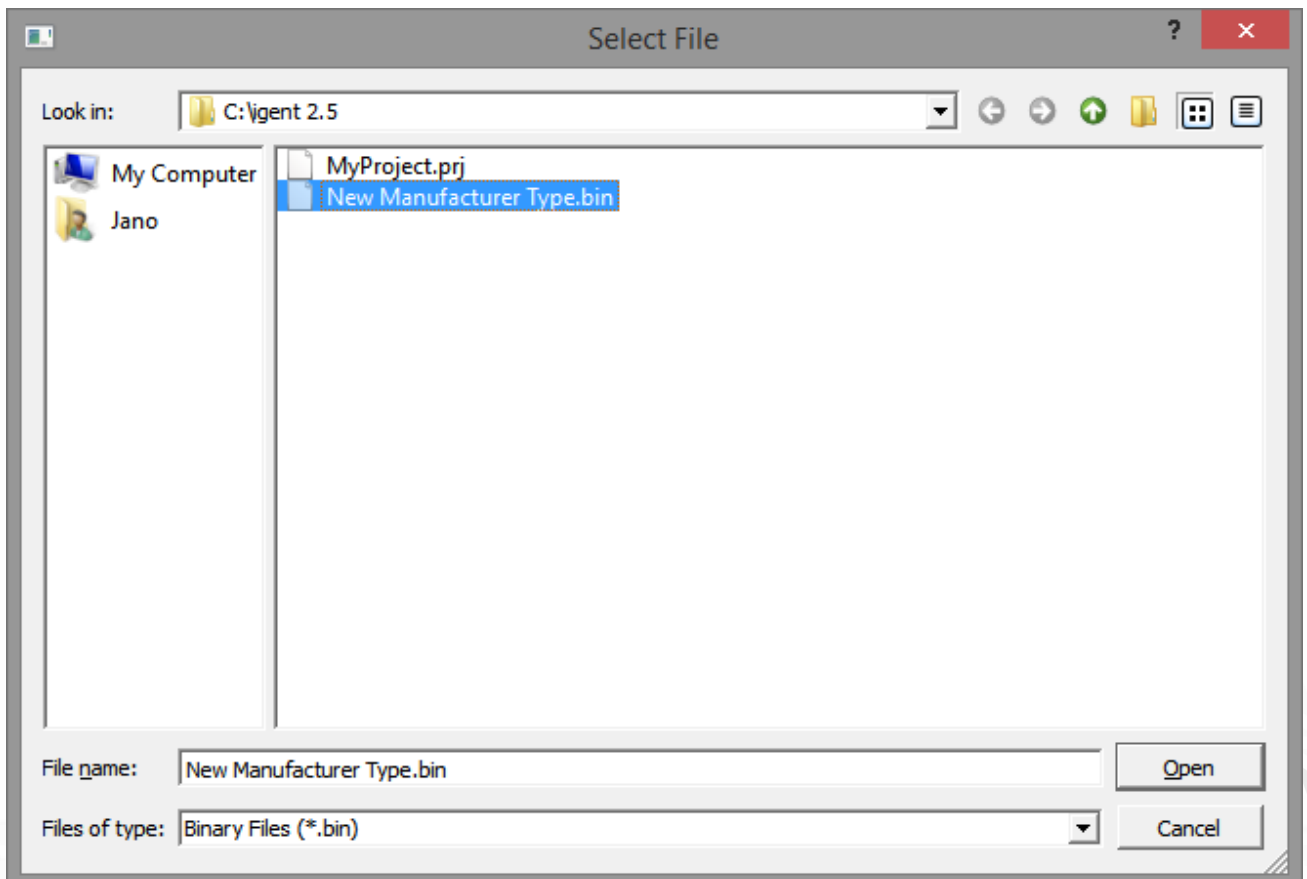


How to save the config file of iGENT-G2:

Please click to iGENT-G2 HW>SAVE. Now your file that will be sent via USB is saved on local disk.

How to send config file to HW of iGENT-G2:

Click iGENT-G2 HW> SEND iGENT-G2 and select file /with.bin/ you like to send to the iGENT-G2 hardware



Click OPEN and file will be sent via USB.

If there is no USB connected or there is no power on iGENT-G2 this dialog will be displayed:

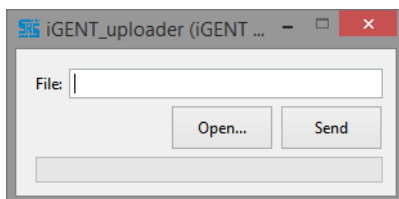


Then reconnect power, check POWER led and USB cable connected to computer.

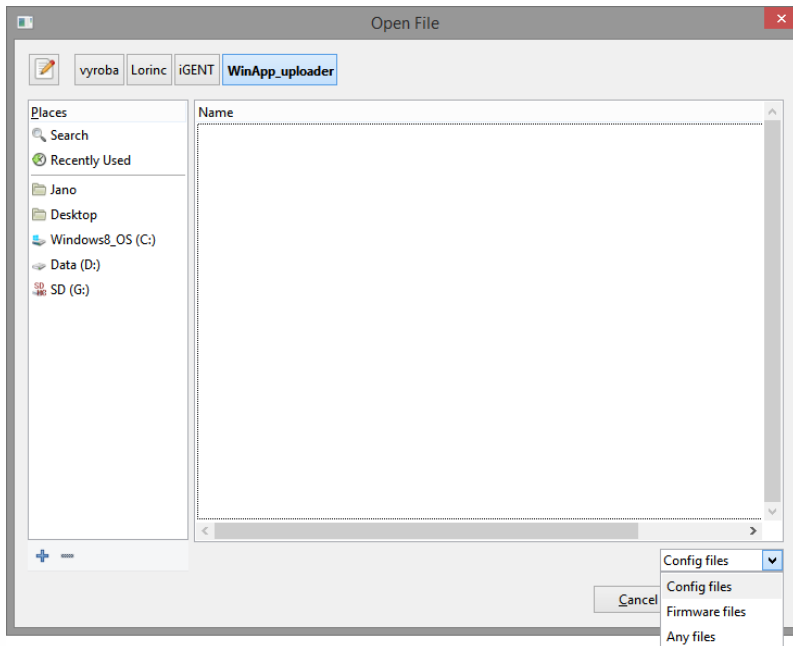
iGENT-G2 firmware update

The iGENT-G2 device needs to be updated to latest firmware via USB to perform smooth operation

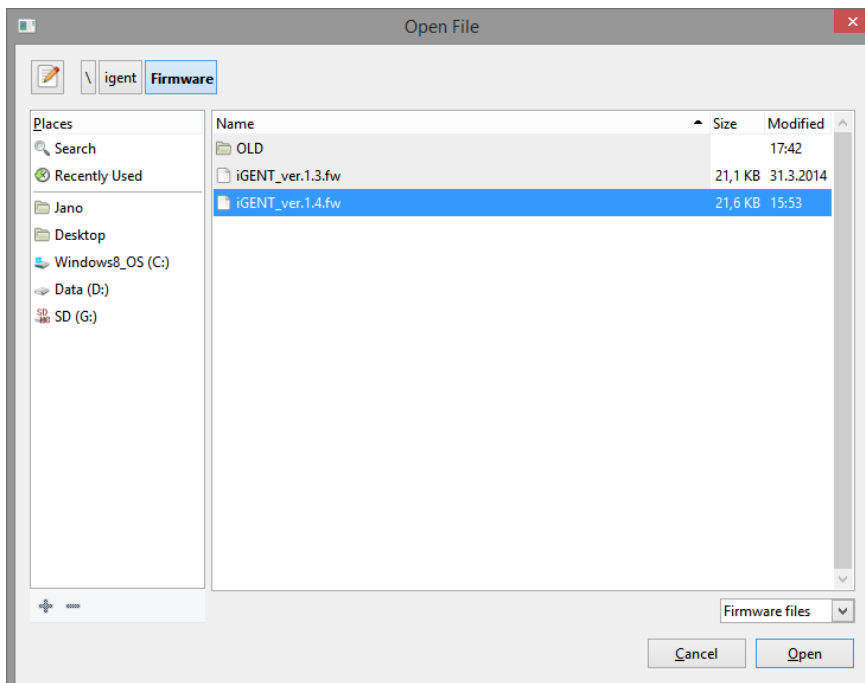
1. Connect iGENT-G2 to the PC via USB cable
2. Please plug in AC PowerCon cable to iGENT-G2 and check if Power LED /green/ is on
3. In iGENT-G2 folder locate the: vusb.exe file
4. Run the application



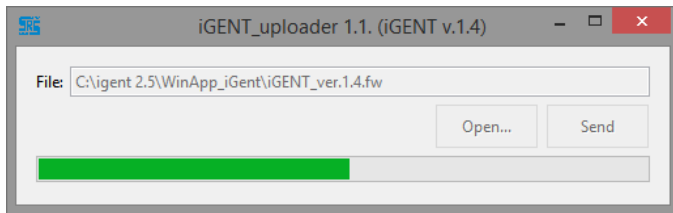
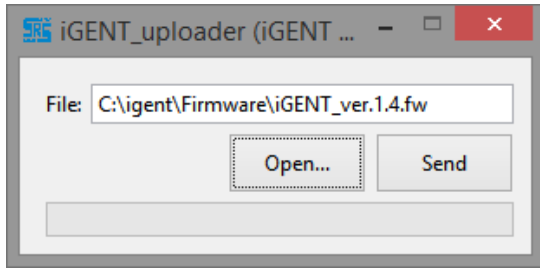
Click OPEN and in bottom corner select **Firmware files**



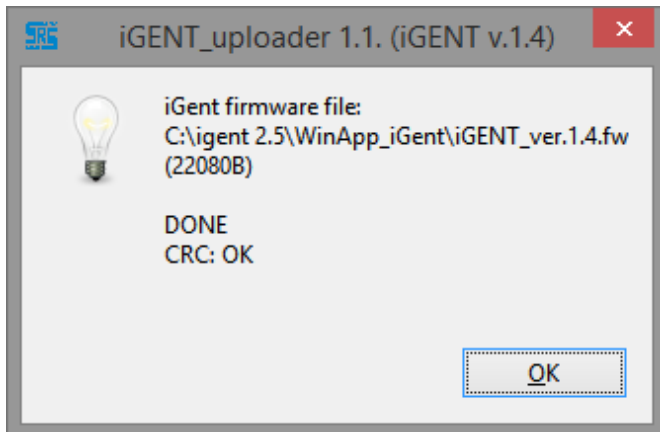
Firmware files will be displayed. Please select `iGENT-G2_ver.1.4.fw` and click **OPEN**



Firmware files will be displayed. Please select iGENT-G2_ver.1.4.fw and click **OPEN**. You will see the firmware file link in File:



Now press Send: You will see progress bar and the information window will be displayed.



Technical data

Main input:

AC 80-264V / 50-60Hz / 15W

Weight:

1.7 kg

DMX Input / Output:

1x USITT DMX512 /RS485/ isolated up to 1000V

Temperature of use:

-10 °C...+45 °C

Housing/Size:

Lightweight Aluminum box with powder coating
234x154x62mm

Warranty:

Two-Year /24-month/
warranty

Mounting points:

Located symmetrically on base plate, 8mm wide hole for securing line
Grid of mounting points: 222x78mm, 4x rubber feet on bottom

DECLARATION OF CONFORMITY

According to guidelines 89/336 EEC and 92/31 EEC:

Name of producer: SRS Group s.r.o.

Address of producer: Rybnicna 36/D, SK- 83106 Bratislava, Slovak Republic

Declares that the product

Name of product: iGENT-G2 converter

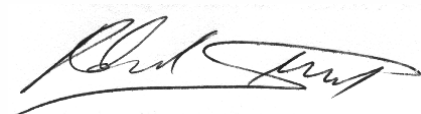
Type: iGENT-G2, iGENT-G2-DIN

Corresponds to the following product specifications:

Safety: EN60065, resp. EN 60950

EMC: EN55103-1, resp. EN55103-2

Bratislava, 10 May 2011



Robert Sloboda

Copyright 2020 SRS Group, s.r.o. | Specifications subject to change without notice.
Document: iGENT-G2_en_manual_M331 | Version 1.0 | Actual as of: 4 June 2020

**SRS Group s.r.o.**

Rybnicna 38/B | 831 07 Bratislava | Slovakia

Phone: +421 2 32 661 800

Email: sales@srs-group.com | www.srs-group.com

